

26.9. (8.5.)

Η ΜΕΤΑΣΤΑΣΙΣ ΤΟΥ Αγίου, ενδόξου καί πανευφήμου Αποστόλου καί θεολόγου,
Ιωάννου τού Ευαγγελιστού.

ΠΡΕΣΤΑΒΛΕΗΪΕ ΕΨΑΓΩ ΑΨΑΛΛΑ Η ΕΨΑΛΜΟΝΤΑ ΙΩΑΝΝΗ ΕΨΟΙΛΟΒΑ.

8. hlas // plag. 4th echos

Ευαγγελιστά Ιωάννη, Ισαγγελε Παρθένε

Byz

Am 24r (24), Dk 23r (49), Ott 33r (69), Trin 31v (32),
G355 52r (54), G260 22v (26), G261 20r (22), G262 13r (14), G265 18r (18), G270 20v (22)

Vi 25v (50), Sn1214 19v (019), Sn1217 – – (023 lacuna → 1.10.) , Sn1219 3v (004)

Rus

Pp 199v (dodatok), S439 18r+98v, S440 17v

S408 (–), S409 43r, S411 25r, S414 354v, S431 144v, S442 53v; Pomor. 56

RI

J005 444r (291)



Am	—	♩	>	>	∩	♩	∩	∩
Trin	—	/	>	>	∩	♩	∩	∩
Dk	—	/	>	>	∩	♩	∩	∩
G265	—	/	>	>	∩	♩	∩	∩
Vi	♩	♩	>	>	∩	∩	∩	∩
Sn1214	♩	♩	>	>	∩	∩	∩	∩
Sn1219	♩	♩	>	>	∩	∩	∩	∩

Ισ- άγ- γε- λε Παρ-θέ- νε*

S439	Σ	♩	♩	♩	♩	∩	∩	∩	∩	Pp
------	---	---	---	---	---	---	---	---	---	----

S439"	Σ	♩	♩	♩	♩	∩	∩	∩	∩	
-------	---	---	---	---	---	---	---	---	---	--

ΡΑ_ ΒΕ_ ΝΕ_ ΑΗ_ ΓΕ_ ΛΟ_ ΜΒ_ ΟΥ_ ΝΟ_ ΤΟ.

S440	Σ	♩	♩	♩	♩	∩	∩	∩	∩	
------	---	---	---	---	---	---	---	---	---	--

ΡΑ_ ΒΝΕ_ ΑΗ_ ΓΒ_ ΛΟ_ ΜΒ_ ΟΥ_ ΝΟ_ ΤΟ.

S409/11	♩	♩	♩	♩	∩	∩	∩	∩	∩	
---------	---	---	---	---	---	---	---	---	---	--

S414	♩	♩	♩	♩	∩	∩	∩	∩	∩	
------	---	---	---	---	---	---	---	---	---	--

S431	♩	♩	♩	♩	∩	∩	∩	∩	∩	
------	---	---	---	---	---	---	---	---	---	--

S442	♩	♩	♩	♩	∩	∩	∩	∩	∩	
------	---	---	---	---	---	---	---	---	---	--



ΡΑ_ ΒΕ_ ΗΕ_ ΑΗ_ ΓΕ_ ΛΟ_ ΜΟ_ ΓΟ_ ΗΟ_ ΠΟ.



Am,Dk	> ̣	̣	̣	̣	̣	̣	̣	̣	̣
G265	> ̣	̣	̣	̣	̣	̣	̣	̣	̣
Trin	> ̣	̣	̣	̣	̣	̣	̣	̣	̣
G270	> ̣	̣	̣	̣	̣	̣	̣	̣	̣



G355	> ̣	̣	̣	̣	̣	̣	̣	̣	̣
Vi	> ̣	̣	̣	̣	̣	̣	̣	̣	̣
Sn1219	> ̣	̣	̣	̣	̣	̣	̣	̣	̣
	θε-	ο-	λό-	γε	θε-	ο-	δί-	δα-	κτε*
Pp	̣	̣	̣	̣	̣	̣	̣	̣	̣
	ΕΘ_	ΓΘ_	ΣΛΘ_	ΒΕ	ΕΘ_	ΓΘ_	ΟΥ_	ΥΕ_	ΗΕ
S439	̣	̣	̣	̣	̣	̣	̣	̣	̣
S439"	̣	̣	̣	̣	̣	̣	̣	̣	̣
S440	̣	̣	̣	̣	̣	̣	̣	̣	̣
S409/11	̣	̣	̣	̣	̣	̣	̣	̣	̣
S414	̣	̣	̣	̣	̣	̣	̣	̣	̣
S431	̣	̣	̣	̣	̣	̣	̣	̣	̣
S442	̣	̣	̣	̣	̣	̣	̣	̣	̣

Sn1214



ΕΘ_ ΓΘ_ ΣΛΘ_ ΒΕ ΕΘ_ ΓΘ_ Υ_ ΥΕ_ ΗΕ



Am,Dk



G270



Ott



G355



Vi



Sn1214

Sn1219



τήν ά-χραν-τον πλευ-ράν,*

Pp



S439/439"

πρε_ π_κ_ τα_ ια_ ρε_ βρα_.

S440



πρε_ π_κ_ τα_ ια_ ρε_ βρα_.

S409/11



S431/42/14

πρε_ π_κ_ τα_ ια_ ρε_ βρα_.

Pomor



J005



προ_ πα_ πα_ ια_ ρε_ βρα_.



G265 — / > > — / 2



Am — / > > — / >



Dk, Ott — / > > — / 2

G355 — / > > — / 2

Vi — / > > — / 2

Sn1214 — / > > — / 2

Sn1219 — / > > — / 2

τό αί- μα και τό ύ- δωρ *

Pp ζ \ L U =

ΚΡЪ_ ВЪ Н БО_ ΔΟΥ.

S439 ζ U L \ =

S439" ζ =U L \ =

S440 ζ v L \ =

S409/11 φ = L L > = U > \ =

S414 φ = L L > = U > \ =

S442

S431 φ = L L > = U > \ =

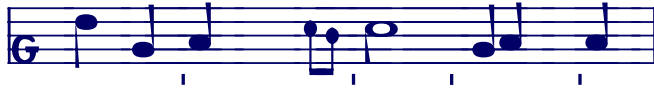
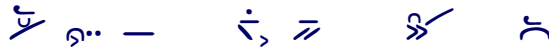
ΚΡΟ_ ΒΕ Η ΒΟ_ ΔΟΥ ΗΣ_ ΤΑ_ ΥΑ_ ΙΟ_ ЦΙΑ



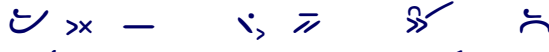
ΚΡΟ Η ΒΟ_ ΔΟΥ ΗΣ_ ΠΑ_ ΥΑ_ ΙΟ_ ЦΙΑ



G265



Am

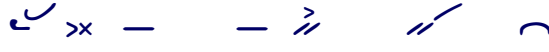


Dk, Ott, G355

Vi



Sn1214



Sn1219



βλύ-ζου-σαν ε- κή- ρυ- ξας, *

Pp



HC TA YA IO CIA ΠΡΟΠΟΒΤ ΔΑ ΛΒ ΗΕ CH.

S439



S439"



S440



S409/11



S442

S414



S431

ΠΡΟ ΠΟ ΒΤ ΔΑ ΛΒ Ε CH.

Pomor



J005



ΠΡΟ ΠΟ ΒΤ ΔΑ ΛΒ Ε CH.



Am



Trin G261



Dk G355

Ott

G260

Vi

Sn1214

Sn1219
τήν αι- ώ- vi- ον ζω- ήν*

Pp
БѢ_ УБ_ НЫ_ И_ ЖИ_ БО_ ТЪ.

S439

S440

S439"

S409/11 S414/31/42



БѢ_ УБ_ НЫ_ И_ ЖИ_ БО_ МО.



Am



Dk
Trin
G265



G270
G260



Ott



G355
Vi
Sn1214
Sn1219

πο ρι- ζό- με- θα ταις Ψυ- χαίς η- μών. +

Pp
ΠΡΗ ΓΕΜ ΛΕ ΜΪ. ΔΟΥ ΣΑ ΜΪ ΝΑ ΣΗ ΜΪ.

S439

S440
ΠΡΗ ΗΜ ΛΑ ΙΟ ΤΪ ΔΟΥ ΣΑ ΝΑ ΣΑ.

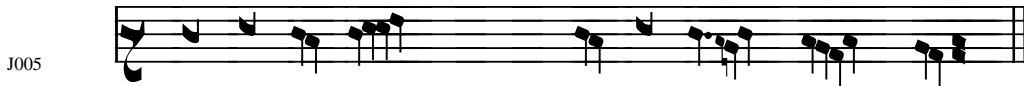
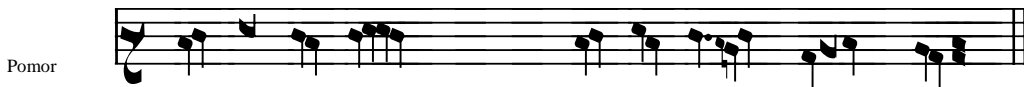
S439"

S409/11

S414

S431

S442



ΠΡΗ ΗΜ ΛΑ ΙΟ ΠΪ ΔΪ ΣΑ ΝΑ ΣΑ.