

## Η απεγνωσμένη διά τόν βίον

### 6. hlas / 2. plag. echos

#### *Ruténske irmologiony // Ruthenian irmologia*

*a)*

**Η** απεγνωσμένη διά τόν βίον

Ⲭιάδηνηαδ ρηπῖλ ράδην

J002 234r, J480 44r, J289 7r, J673 63r, J833 96r, J672, I80 33v, I229 271, L1709 165r

*b)*

**Τίς** σου τόν χιτόνα Σώτερ διείλεν

Ⲭτὸ τϭοὸ εῖπε ρήζδ ραζαρά;

J002 230r, J480 45r, J289 6v, J429 43r, J673 63v, I80 33r, I229 270, J046 266r,  
L1700 317r, L1709 165r

## TEXT

1 **Η** απεγνωσμένη διά τόν βίον.  
2 καί επεγνωσμένη διά τόν τρόπον.  
3 τό μύρον βαστάζουσα, προσήλθέ σοι βοῶσα.  
4 **Μή με** τήν πόρνην απορρίψης, ο τεχθείς εκ Παρθένου.  
5 **μή μου** τά δάκρυα παρίδης, η χαρά τών Αγγέλων.  
6 **αλλά** δέξαι με μετανοουσαν,  
7 ἦν ουκ απώσω αμαρτάνουσαν Κύριε,  
8 διά τό μέγα σου έλεος.

1 **Ἡ** αἰωνια ἡ ἀπογνωσμένη, ζητήσῃ βοήθειαν,  
2 ἡ ἐπεγνωσμένη, ἡ δὲ ἄσπετος, ἡ δὲ ἄσπετος,  
3 μύρον βαστάζουσα, προσήλθέ σοι βοῶσα.  
4 **Μή με** τήν πόρνην απορρίψης, ο τεχθείς εκ Παρθένου.  
5 **μή μου** τά δάκρυα παρίδης, η χαρά τών Αγγέλων.  
6 **αλλά** δέξαι με μετανοουσαν,  
7 ἦν ουκ απώσω αμαρτάνουσαν Κύριε,  
8 διά τό μέγα σου έλεος.

# Model

J002 a iné RI

1-2

Musical notation for section 1-2, consisting of two staves. The top staff contains a sequence of notes, with the first two notes highlighted in red. The bottom staff contains a sequence of notes, with several notes highlighted in yellow. The notation includes stems and beams, indicating a specific rhythmic pattern.

J289

I229

3

Musical notation for section 3, consisting of two staves. The top staff contains a sequence of notes, with several notes highlighted in red. The bottom staff contains a sequence of notes, with several notes highlighted in red. The notation includes stems and beams, indicating a specific rhythmic pattern.

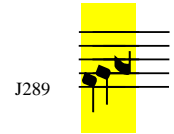
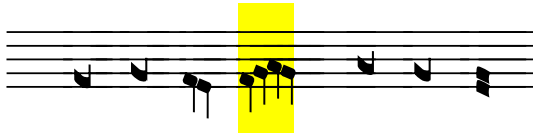
4-5

Musical notation for section 4-5, consisting of two staves. The top staff contains a sequence of notes, with several notes highlighted in yellow. The bottom staff contains a sequence of notes, with several notes highlighted in red. The notation includes stems and beams, indicating a specific rhythmic pattern.

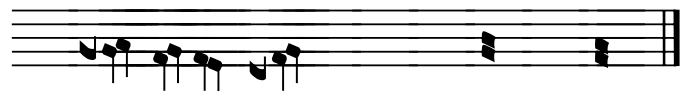
6



7



8



Aplikácia



Ⲅ ⲓⲁ ⲁⲛⲁ ⲁⲛⲁ ⲛⲓⲛⲓ ⲁⲛⲁ ⲓⲁⲛⲁ



ⲛⲓ ⲟⲩⲃⲉⲛⲁ ⲓⲁⲛⲁ ⲛⲓⲛⲓ ⲁⲛⲁ ⲓⲁⲛⲁ



ⲙⲩⲛⲁ ⲛⲓⲛⲓ ⲛⲓⲛⲓ ⲛⲓⲛⲓ ⲛⲓⲛⲓ ⲛⲓⲛⲓ ⲛⲓⲛⲓ ⲛⲓⲛⲓ



ⲁⲛⲁ ⲛⲓⲛⲓ ⲛⲓⲛⲓ ⲛⲓⲛⲓ ⲛⲓⲛⲓ ⲛⲓⲛⲓ ⲛⲓⲛⲓ



ⲓⲁⲛⲁ ⲛⲓⲛⲓ ⲛⲓⲛⲓ ⲛⲓⲛⲓ ⲛⲓⲛⲓ



ⲁⲛⲁ ⲛⲓⲛⲓ ⲛⲓⲛⲓ ⲛⲓⲛⲓ ⲛⲓⲛⲓ ⲛⲓⲛⲓ



ⲓⲁⲛⲁ ⲓⲁⲛⲁ ⲛⲓⲛⲓ ⲛⲓⲛⲓ ⲛⲓⲛⲓ



ⲛⲓⲛⲓ ⲛⲓⲛⲓ ⲛⲓⲛⲓ ⲛⲓⲛⲓ ⲛⲓⲛⲓ ⲛⲓⲛⲓ



ⲓⲁⲛⲁ ⲛⲓⲛⲓ ⲛⲓⲛⲓ ⲛⲓⲛⲓ ⲛⲓⲛⲓ ⲛⲓⲛⲓ ⲛⲓⲛⲓ



ⲛⲓⲛⲓ ⲛⲓⲛⲓ ⲛⲓⲛⲓ ⲛⲓⲛⲓ ⲛⲓⲛⲓ ⲛⲓⲛⲓ



По гѣхъ жѣ на ѿ гѣхъ хѣ



ѿ бѣгъ те пѣ прѣ спа ни це спа се ні ѿ



и мѣ ра со сае за ми ра пѣ ро ра го цѣ го те бѣ во пі ѿ ше



внѣдъ и мѣ ѿй властѣ ѿ спа вѣ ни гѣ хи



внѣдъ со гѣ ша го цѣ



по ка ѿ ні ѿ ѿ жи да ѿй



но бла ды ко спа си ма



ѿ вол ны гѣ хѣ ны ѿ



вѣ ли кі ѿ ра ди пѣ ро е ѿ ми ло сти.