

Samopodobeny 6. hlasu BR

// Automela – 6th echos BR

Bolharskij rospev (BR) – RI, PP

// *Bulgarian chant (BR) in RI (Ruthenian irmologia) and PP (prostopinije)*

VS (Tončeva) 76

J289

L1816

Ánhelskija predidíte síly

Prepis // Transcription



А́ ѓ̣ ѓ̣ с̣к̣і́ ѿ



А́ ѓ̣ ѓ̣ с̣к̣і́ ѿ
А́ ѓ̣ ѓ̣ с̣к̣і́ ѿ

L1700



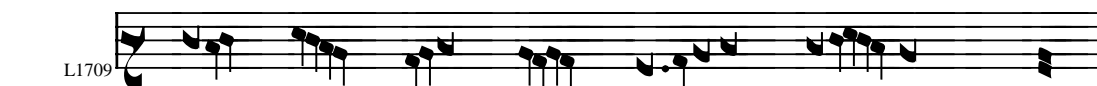
А́ н̣́ ѓ̣ с̣к̣і́ ѿ



А́ н̣́ ѓ̣ с̣к̣і́ ѿ



п̣р̣ѣ́ н̣ д̣н̣ ꙗ́ ꙗ́ с̣н̣ ѿ



п̣р̣ѣ́ н̣ д̣к̣ ꙗ́ с̣н̣ ѿ

L1700



п̣р̣ѣ́ н̣ д̣к̣ ꙗ́ с̣н̣ ѿ



п̣р̣ѣ́ н̣ д̣х̣ ꙗ́ с̣н̣ ѿ

L1816



ἦ_ ρε βο βη_ φλε_ ε_ με

L1709



ἦ_ ρε βο βη_ φλε_ ε_ με

L1700

J289



ἦ_ ρε βο βη_ φλε_ ε_ με

VS



ἦ_ ρε βζ βη_ φλε_ ω_ με

L1816



ὄγ_ γο_ πο_ βα'' με ἴα_ σαν

L1709



ὄγ_ γο_ πο_ βα'' με ἴα_ σαν

L1700

J289



ὄγ_ γο_ πο_ βα'' με ἴα_ σαν

VS



ὄγ_ γο_ πο_ βα'' με ἴα_ σαν

Musical staff L1816 with notes and rests.

L1816

СА0_ БО БО [⌘]РА_ ДА_ [┐]ε_ СА

Musical staff L1709 with notes and rests.

L1709

L1700

СА0_ БО БО [⌘]РА_ ДА_ [┐]ε_ СА

Musical staff VS with notes and rests.

VS

СА0_ БО БО [⌘]РА_ ДА_ [┐]ε_ СА

Musical staff J289 with notes and rests.

J289

СА0_ БО БО [⌘]РА_ ДА_ [┐]ε_ СА

Musical staff L1816 with notes and rests.

L1816

ΠΡΕ_ ΜΧ_ [┐]ΔΡΟ ΠΡΗ_ΧΟ_ [┐]ΔΗ

Musical staff L1709 with notes and rests.

L1709

L1700

ἦ ΠΡΕ_ ΜΧ_ [┐]ΔΡΟ ΠΡΗ_ ΧΟ_ [┐]ΔΗ

Musical staff VS with notes and rests.

VS

ἦ ΠΡΕ_ ΜΧ_ [┐]ΔΡΟ ΠΡΕ_ ΧΟ_ [┐]ΔΗ

Musical staff J289 with notes and rests.

J289

ΠΡΕ_ ΜΧ_ [┐]ΔΡΟ ἦ_ ΣΧΟ_ [┐]ΔΗ_ ΠΖ

ΠΡΗ_ Ε_ ΛΕ_ ЦѢ_

ΠΡΙ_ Η_ ΜΗ

ΠΡΗΗ_ ΜΗ

ΠΡΗ_ Ε_ ΛΗ

ΠΡΗ_ Ε_ ΛΗ

ЦѢ_ ΛΟ_ ΒΑ_ ΗΙ_ Ε_ ЦѢQ_ ΚΒΗ

ЦѢ_ ΛΟ_ ΒΑ_ ΗΙ_ Ε_ ЦѢQ_ ΚΒΗ

L1700

ЦѢ_ ΛΟ_ ΒΑ_ ΗΙ_ Ε_ ЦѢQ_ ΚΒΗ

ЦѢ_ ΛΟ_ ΒΑ_ ΗΙ_ Ε_ ЦѢQ_ ΚΒΗ

L1816



НА_ РА_ ^аДО_ БО_ ГО_ РО_ ДН_ ЦѢ

L1709



L1700

НА_ РА_ ^аДО_ БО_ ГО_ РО_ ДН_ ЦѢ

J289



НА_ РА_ ^аДО_ БО_ ГО_ РО_ ДН_ ЦН

VS



НА_ РА_ ^аДО_ БО_ ГО_ РО_ ДН_ ЦН

L1816



АГО_ ДІ_ ^аЕ_ РЦѢ

L1709



L1700

АГО_ ДІ_ ^аЕ_ РЦѢ

VS



АГО_ ДН_ ^аЕ_ РЦѢ

J289



АГО_ ДІ_ ^аЕ_ РЦѢ

L1816
 БАА_ ГО_ САО_ БѢ ПРН_ ШЕ_ ДЫ''

L1709
 БАА_ ГО_ САО_ БѢ ГРА_ ДЫ''

J289
 БАА_ ГО_ САО_ БѢ РО_ ДѢ_ СЪ

VS
 БАА_ ГО_ САО_ БѢ ПРН_ ШЕ_ ДЫ''

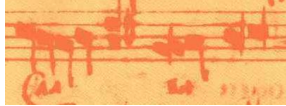
L1816
 БО_ ЖЕ НА СЛА_ БА ПЕ_ БѢ.

L1709
 БО И_ МЪ ГО_ СПО_ НѢ.

J289
 БО НА СЛА_ БА ПЕ_ БѢ.

VS
 БО НА СЛА_ БА

ПЕ_ БѢ.



Rozbor // Analysis

Nápev je iteratívny s jedinou opakovanou formulou P, avšak v dvoch variantoch líšiacich sa deklamačnou časťou.

// The melody is iterative using only one repeated formula P, but in two variants that differ one from another in the declamation part.

- | | |
|--|---|
| <ol style="list-style-type: none"> 1. Αι Αγγελικαί, προπορεύεσθε Δυνάμεις, 5+8 2. οι εν Βηθλεέμ, ετοιμάσατε την Φάτνην, 5+8 3. ο λόγος γάρ γεννάται η σοφία προέρχεται 7+8 4. δέχου ασπασμόν η Εκκλησία, 10 5. εις τήν χαράν τής Θεοτόκου λαοί είπωμεν 9+5 6. Ευλογημένος ο ελθών Θεός ημών δόξα σοι. 8+7 | <p>Ἄγγλικίᾱ προεῖδήτε εἰλεῖ,
 ἦνε κε κε βηθλεεμίᾱ οἴγοτόβητε ἄϊλε:
 ελόβο εο ραηδάετρεᾱ, μδδροετῆ προηεχόδητῆ,
 πρῆεμλετῆ εεελοβάνηε εἴκοεε.
 ηη ράδοετῆ εἴεε, λείδιε, ρεεεμε:
 εἴγοελοεβέηε πρηεεέδηἦ εἴεε ηάηεε, εἴεεε τεεεε.</p> |
|--|---|

1	P/ + P- + Pz
2	P/ + P- + Pz
3	P^ + Px // P^ + Px
4	P/ + P- + Pz
5	P^ + Px (// P^ + Px) L1700/09
6	P/ + P- + Pz*

Motív P/

L1816



L1700/09



J289



J289



VS



VS



Motív P- + Pz

Hlavný kadenčný motív ukončuje aj pieseň ako celok. Jedine vo VS je uvedený predĺžený záver s pozoruhodnými moduláciami stupnice a finálou o stupeň nižšou.

The image displays eight musical staves, each representing a different version of the 'Motív P- + Pz'. The staves are labeled on the left as follows: L1816, L1700/09, J289, J289, J289, VS, VS, and VS*. The first seven staves show the motif in its basic form, while the eighth staff (VS*) shows a longer, more complex version with a final cadence. The notation includes various rhythmic values and melodic intervals, with some notes marked with a grey highlight.

Motív P^

Motív P^ je v prvých dvoch prípadoch krátky a vo VS (a L1816?) využíva melodémy z Px. V treťom prípade je buď predĺžený opakovaním deklamačných melodém (VS, J289), alebo krátky s hustejšie „nadeným“ textom (L1816). V L1700/09 je vsunutý záverový Px, teda sa tu objavuje o formulu viac. Hoci ide nepochybne o umelý editorský zásah, z hľadiska súladu s textovou štruktúrou je správny.

// The motif P^ is short in its basic form. In VS some melodems from Px are used. The longer form (J289, VS) is extended by repeating some declamation melodems. In L1700/09 the cadential Px is inserted. This later addition of editors is nevertheless correct in relation to the structure of the text.

L1816

A single musical staff for L1816. The first four notes are highlighted in green: a quarter note, a quarter note, a quarter note, and a quarter note.

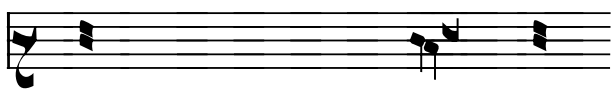
L1816

A single musical staff for L1816. The first four notes are highlighted in green: a quarter note, a quarter note, a quarter note, and a quarter note.

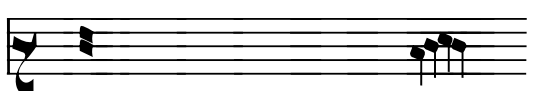
L1700/09

A single musical staff for L1700/09. It contains a sequence of notes: a quarter note, a quarter note, a quarter note, a quarter note, a quarter note, a quarter note, and a quarter note.

L1700/09

A single musical staff for L1700/09. It contains a sequence of notes: a quarter note, a quarter note, a quarter note, a quarter note, a quarter note, a quarter note, and a quarter note.

L1700/09

A single musical staff for L1700/09. It contains a sequence of notes: a quarter note, a quarter note, a quarter note, a quarter note, a quarter note, a quarter note, and a quarter note.

VS

A single musical staff for VS. The first four notes are highlighted in green: a quarter note, a quarter note, a quarter note, and a quarter note.

+

A musical staff with a plus sign at the beginning, followed by a sequence of notes: a quarter note, a quarter note, a quarter note, a quarter note, a quarter note, a quarter note, and a quarter note.


+

A musical staff with a plus sign at the beginning, followed by a sequence of notes: a quarter note, a quarter note, a quarter note, a quarter note, a quarter note, a quarter note, and a quarter note.

J289

A single musical staff for J289. The last two notes are highlighted in orange: a quarter note and a quarter note.

J289

A single musical staff for J289. It contains a sequence of notes: a quarter note, a quarter note, a quarter note, a quarter note, a quarter note, a quarter note, and a quarter note.

+

A musical staff with a plus sign at the beginning, followed by a sequence of notes: a quarter note, a quarter note, a quarter note, a quarter note, a quarter note, a quarter note, and a quarter note.

+

A musical staff with a plus sign at the beginning, followed by a sequence of notes: a quarter note, a quarter note, a quarter note, a quarter note, a quarter note, a quarter note, and a quarter note. The last two notes are highlighted in orange.

Motív Px

Motív Px sa napája na P[^] na melodéme, ktorá je farebne odlíšená.

The image displays a musical score for the Motív Px, consisting of eight staves. Each staff begins with a treble clef and a common time signature. The notes are color-coded to highlight specific melodic elements:

- L1816:** The first two staves show the initial melodic phrase in black.
- L1700/09:** The third staff shows the continuation of the phrase, with the notes G4, A4, and B4 highlighted in green.
- VS:** The fourth and fifth staves show the phrase in a different voice part, with the notes G4, A4, and B4 highlighted in green.
- J289:** The sixth, seventh, and eighth staves show the phrase in a different voice part, with the notes G4, A4, and B4 highlighted in green. The eighth staff also includes an orange highlight for the notes F4 and G4.

Porovnanie

Automelon sa čiastočne podobá na kekragarion (osobitne jeho úvodnú formulu A).

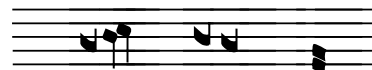
// The automelon partially resembles the kekragarion (esp. its initial formula A).

Kekragarion / Automelon

VS/kekr. form. A



VS/automelon



Tridnéven

Tento samopodoben má vo VS prostú melódiu kekragaria (malý nápev, cf. J289) a je uvedený v dokumente o stichirových nápevoch 6. hlasu BR.

// This automelon in VS uses the simple kekragarion small chant (J289). Therefore it is transcribed and analysed in the document about sticheric melodies of the 6th mode BR.

Vse upovanije

Automelon (VS)



Все ѿу_ по_ ба_ нї_ є_ на_ не_ бє_ сѣ[×] по_ ло_ жи_ ша



сѣ_ кро_ ви_ цїе_ не_ кро_ до_ мо_ сє_ бѣ_ сва_ па_ га_ сѣ_ кро_ ла_ ѿ_ спа



пѣ_ не_ при_ ѡ_ спє_ пѣ_ не_ же_ ѿ_ да_ ди_ те_ бо_ лѡ_ ци_ ѿ_ сїѣ_ ле_ нї_ є



ѡ_ па_ ѿ_ сѣ_ бѣ_ є_ ба_ ге_ ски_ не_ спѡ_ жи_ спє_ ѡ_ ве_ ко_ же_ ѿ_ ско_ по



бѣ_ го_ дѣ_ ѡ_ нїе_ по_ да_ є_ те_ да_ вѣ_ все^ω_ послѣ_ шанки_ бѣ_ ше_ хри_ по_ ви



сѣ_ дѣ^ε_ чо_ бє_ нї_ є^ω_ мо_ лѡ_ сѡ_ ѡ_ дѣ_ ша_ на_ шї[×].

Stichira (J289)

Jediný BR nápev stichiry uvedený v J289 sa líši od kekragaria a svojou štruktúrou pripomína skôr samopodoben *Vse upovaniye*. Preto je uvedený tu.

// The melody of the stikheron in J289 resembles to some measure the melody of the automelon *Vse upovaniye*.



J289

НѢ У СПА БИ НА БО ЧЛО ВЕ ЧЕ СКО Е ПРѢ СПО СЪ НИ Е



J289

ПРѢ ЧИ СПА СЪ БЛА ДИ ЧИ ЦЕ



J289

НО ПРІ МН МО АЕ НИ СЪ РЪ СВО И



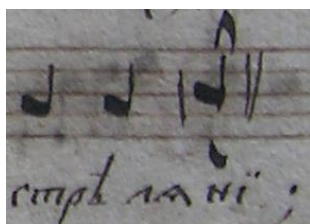
J289

СКО БИ ОУ БО ШБ ДЕ ЖА НА



J289

ПЕР ПЪ ПИ НЕ МО ЖЕ Ш БЪ СОВ СКА ГО СПРЪ СЪ НИ.



Rozbor // Analysis

Formula B



Formula A



Formula Z

