

Automelon + Prosomoia

Κύριε ει καί κριτηρίω παρέστης

Γ̂η, ἄψε ἡ εὐδήληψιδ̂ προεπτάλιζ̂ ε̂η

**8. hlas // plag. 4<sup>th</sup> echos**

**Samopodoben a podobny v ruskom oktoichu (ZR)**

// Automelon and prosomoia in the Russian Oktoechos (ZR)

**Rus**

Umiestnenie v nedel'nom Oktoichu // Placed in the Sunday Oktoechos

S444 98r, S411 439v, S412 67v, S414 232v, S425 125r, S429 294v, S430 354v (*široký nápev*), S431 109v, S432 117r

POk 218v (Pomor. Oktaj)

Prepis // Transcription

BN	ⲓ ⲛ ⲛ	ⲓ ⲛⲗ ⲗ ⲗ ⲗ ⲗ ⲛⲗ	
S444	ⲓ ⲛ ⲛ	ⲓ ⲛⲗ ⲗ ⲗ ⲗ ⲓ ⲛⲗ	S411/12/16/29/29 <sup>x</sup> /31 <sub>12</sub> /
S424	ⲓ ⲛ ⲛ	ⲓ ⲛⲗ ⲗ ⲗ ⲗ ⲓ ⲛⲗ	
S431 <sup>x</sup>	ⲓ ⲛ ⲛ	ⲓ ⲛⲗ ⲗ ⲗ ⲗ ⲗ ⲓ ⲛⲗ	S431 <sub>0</sub> ⲓ
S426	ⲓ ⲛ ⲛ	ⲓ ⲛⲗ ⲗ ⲗ ⲗ ⲗ ⲗ ⲓ ⲛⲗ	
S414 <sup>x</sup>	ⲓ ⲛ ⲛ	ⲓ ⲛⲗ ⲗ ⲗ ⲗ ⲗ ⲓ ⲛⲗ	
S414 <sub>0</sub>	ⲓ ⲛ ⲛ	ⲓ ⲛⲗ ⲗ ⲗ ⲗ ⲗ ⲓ ⲛⲗ	
S414 <sub>1</sub>	ⲓ ⲛ ⲛ	ⲓ ⲛⲗ ⲗ ⲗ ⲗ ⲗ ⲓ ⲛⲗ	
S414 <sub>2</sub>	ⲓ ⲛ ⲛ	ⲓ ⲛⲗ ⲗ ⲗ ⲗ ⲗ ⲓ ⲛⲗ	
0	ⲟ ⲛⲓⲡⲟ ⲗⲏ	ⲁ ⲛⲓⲈ ⲏ ⲏⲁ ⲛⲟⲩ ⲗⲏ ⲛⲓ ⲡⲣⲈ ⲗⲟ ⲛⲧⲁ	
1	ⲟ ⲛⲓⲡⲟ ⲗⲏ	ⲱ ⲣⲟⲩ ⲗⲏ Ⲉ ⲏⲁ ⲗⲏ ⲓⲁ ⲛⲟ ⲗⲁ	
2	ⲟ ⲛⲓⲡⲟ ⲗⲏ	ⲁ ⲛⲓⲈ ⲓⲁ ⲓⲕⲟ ⲓⲈⲣ ⲧⲛⲁ ⲧⲁ	

POk

ⲟ ⲛⲓⲡⲟ ⲗⲏ ⲁ ⲛⲓⲈ ⲏ ⲏⲁ ⲛⲟⲩ ⲗⲏ ⲛⲓ ⲡⲣⲈ ⲗⲟ ⲛⲧⲁ

POk

ⲟ ⲛⲓⲡⲟ ⲗⲏ ⲱ ⲣⲟⲩ ⲗⲏ Ⲉ ⲏⲁ ⲗⲏ ⲓⲁ ⲛⲟ ⲗⲁ

POk

ⲟ ⲛⲓⲡⲟ ⲗⲏ ⲁ ⲛⲓⲈ ⲓⲁ ⲓⲕⲟ ⲓⲈⲣ ⲧⲛⲁ ⲧⲁ

S444



S411;



S414<sup>x</sup>



S416/24;



S431<sup>x</sup>



S433<sup>x</sup>



S429



S429<sup>x</sup>



S432



S431

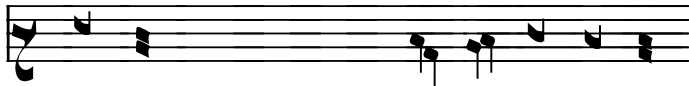


0

ΠΗ\_ ΛΑ\_

ΤΟ\_ ΜΕ\_ ΣΟΥ\_ ΔΗ\_ ΜΟ\_

POk



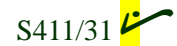
ΠΗ\_ ΛΑ\_

ΤΟ\_ ΜΕ\_ ΣΟΥ\_ ΔΗ\_ ΜΟ\_

S444



S412;



S429



S414

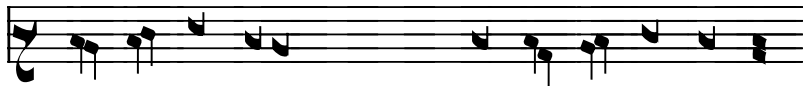


1

ΚΡΕ\_ ΣΤΟ\_ ΤΒΟ\_ Η

ΔΑ\_ ΛΟ\_ Ε\_ ΣΗ\_ ΠΑ\_ ΜΟ

POk



S444



S411/12/31

S429



S414



2

Κ̄ ΓΡΟ\_ Β̄ Η\_ ΙΟΥ\_ ΔΕ\_ Η\_ ΠΟ\_ ΛΟ\_ ΖΗ\_ ΣΙΑ

POk





S444



S411/12/16/31<sup>3</sup>, BN

S414<sup>x</sup>



S424

S414



S429<sup>x</sup>



S433<sup>x</sup>



S432<sup>x</sup>



S429/32



S431

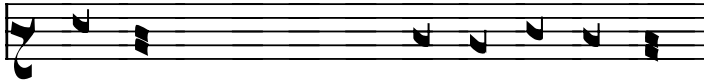


0

СЪ\_ ѿ\_

ТЕ\_ ЦЕ\_ МЕ СЪ\_ ДА.

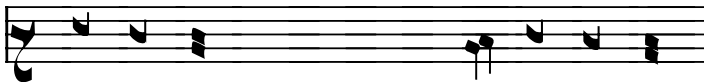
POk



СО\_ ѿ\_

ТЕ\_ ЦЕ\_ МЕ СЪ\_ ДА.

POb



СО\_ ѿ\_ ЦЕ

СЪ\_ ДА.

S444



S411/31



S412



S414



S429



1

НЕ\_ МО\_ ГЪ\_ И\_ БО\_ ЗИ\_ РА\_ ТИ\_ НА\_ СИ\_ ЛОУ\_ Е\_ ГО.

POk



S444



S411/31

S412



S429



S414



2

БО\_ И\_ НИ\_ ТЕ\_ БЕ

СТРЕ\_ ЖА\_ ЧОУ

POk



S444	♩: ♩ ♩ ♩:	♩ ♩ =	
S411	♩: ♩ ♩ ♩:	♩ ♩ =	S412/24, BN
S431 <sup>x</sup>	♩: ♩ ♩ ♩:	♩ ♩ =	
S429 <sup>x</sup>	♩: ♩ ♩ ♩:	♩ ♩ =	S429
S414 <sup>x</sup>	♩: ♩ ♩ ♩:	♩ ♩ =	S415
S414	♩: ♩ ♩ ♩:	♩ ♩ =	
S416	♩: ♩ ♩ ♩:	♩ ♩ =	
S431	♩ ♩ ♩ ♩:	♩ ♩ =	
S432 <sup>x</sup>	♩ ♩: ♩ ♩ ♩:	♩ ♩ =	

0 И ВЪС\_КРЕ\_СО ИЗ\_МЕР\_ТВЫИ ХО.

POk

И ВОС\_КРЕ\_СО ИЗ\_МЕ\_ТВЫИ\_ХО

POb

И ВОС\_КРЕ\_ИЗ\_МЕ\_ТВЫИ.

S444	♩: ♩ ♩ ♩:	♩: ♩ ♩ ♩:	S411/31
S412	♩: ♩ ♩ ♩:	♩: ♩ ♩ ♩:	
S429	♩: ♩ ♩ ♩:	♩: ♩ ♩ ♩:	
S414	♩: ♩ ♩ ♩:	♩: ♩ ♩ ♩:	

1 ИА\_КО МЕР\_ТВЫИ\_А СО\_ВО\_СТА\_ВЛА\_Е\_ТЕ

POk

S444	♩: ♩ ♩ ♩:	♩: ♩ ♩ ♩:	S411/31
S412	♩: ♩ ♩ ♩:	♩: ♩ ♩ ♩:	
S429	♩: ♩ ♩ ♩:	♩: ♩ ♩ ♩:	
S414	♩: ♩ ♩ ♩:	♩: ♩ ♩ ♩:	

2 И ИА\_КО ЖИ\_ВО\_ТА СЪ\_КРО\_ВИ\_ЦЕ

POk

S444 <sub>01</sub>		Л	Л	Л	Л	=
S412		Л	Л	Л	Л	=
S414 <sup>x</sup>		Л	Л	Л	Л	=
S429 <sub>0</sub>		Л	Л	Л	Л	=
S429 <sub>1</sub>		Л	Л	Л	Л	=
S429 <sup>x</sup>		Л	Л	Л	Л	=
S433 <sup>x</sup>		Л	Л	Л	Л	=
S431 <sub>0</sub>		Л	Л	Л	Л	=
0	<b>ВСЕ</b> _ГО	МН	РА	СВО	БО	ДН.
1	И СЪ_	МЕ	РТЕ	ОУ	ПРА	ЗНИ

S424/11<sub>01</sub>/31<sup>x</sup>, S412<sub>1</sub>, **BN**, S416

S414<sub>01</sub>/31<sub>1</sub>

POk01

ВСЕ\_ГО                    МН\_РА СВО\_БО\_ДН  
И СО\_                    МЕ\_РТЕ ОУ\_ПРА\_ЗНИ

S444		Л	Л	Л	Л	=
S414		Л	Л	Л	Л	=
2	ПЕ_УА_	ТН_Ю	ПЕ_УА_	ТЛБ_ША.		

S411/12/29/31

POk

S444	ㄣ ㄣ ㄣ	ㄣ ㄣ ㄣ ㄣ ㄣ ㄣ	=	
S411	ㄣ ㄣ	ㄣ ㄣ ㄣ ㄣ ㄣ ㄣ	=	BN; S424 ㄣ
S412	ㄣ ㄣ	ㄣ ㄣ ㄣ ㄣ ㄣ ㄣ	=	
S431 <sup>x</sup>	ㄣ ㄣ	ㄣ ㄣ ㄣ ㄣ ㄣ ㄣ	=	
S426	ㄣ ㄣ	ㄣ ㄣ ㄣ ㄣ ㄣ ㄣ	=	
S432	ㄣ ㄣ	ㄣ ㄣ ㄣ ㄣ ㄣ ㄣ	=	
S416	ㄣ ㄣ	ㄣ ㄣ ㄣ ㄣ ㄣ ㄣ	=	
S414 <sup>x</sup>	ㄣ ㄣ	ㄣ ㄣ ㄣ ㄣ ㄣ ㄣ	=	
S414	ㄣ ㄣ	ㄣ ㄣ ㄣ ㄣ ㄣ ㄣ	=	
S432	ㄣ ㄣ	ㄣ ㄣ ㄣ ㄣ ㄣ ㄣ	=	
S429	ㄣ ㄣ	ㄣ ㄣ ㄣ ㄣ ㄣ ㄣ	=	
S429 <sup>x</sup>	ㄣ ㄣ	ㄣ ㄣ ㄣ ㄣ ㄣ ㄣ	=	
S431	ㄣ ㄣ	ㄣ ㄣ ㄣ ㄣ ㄣ ㄣ	=	
0	ω_ τo	ρα_ βο_ τῆς υἱο_ φα_ γo.		

POk

ω\_ τo                  ρα\_ βο\_ τῆς υἱο\_ φα\_ γo.

S444	ㄣ ㄣ ㄣ ㄣ ㄣ ㄣ	ㄣ ㄣ ㄣ ㄣ ㄣ ㄣ	=	S412
S411	ㄣ ㄣ ㄣ ㄣ	ㄣ ㄣ ㄣ ㄣ ㄣ ㄣ	=	
S431	ㄣ ㄣ ㄣ ㄣ	ㄣ ㄣ ㄣ ㄣ ㄣ ㄣ	=	
S429	ㄣ ㄣ ㄣ ㄣ	ㄣ ㄣ ㄣ ㄣ ㄣ ㄣ	=	
S414	ㄣ ㄣ ㄣ ㄣ	ㄣ ㄣ ㄣ ㄣ ㄣ ㄣ	=	
1	σε_ γo	ρα_ δη πο_ κλα_ ηα_ ε_ μο_ σα		

POk

S444	ㄣ ㄣ ㄣ ㄣ	ㄣ ㄣ ㄣ ㄣ	=	
S411	ㄣ ㄣ ㄣ ㄣ	ㄣ ㄣ ㄣ ㄣ	=	S412/31 ㄣ
S429	ㄣ ㄣ ㄣ ㄣ	ㄣ ㄣ ㄣ ㄣ	=	
S414	ㄣ ㄣ ㄣ ㄣ	ㄣ ㄣ ㄣ ㄣ	=	
2	ης_ β'ς_ κρε_ σε	η πο_ दा_ στε		

POk



