

ΑΚΟΛΟΥΘΙΑ ΤΩΝ ΩΡΩΝ  
ΤΗΣ ΑΓΙΑΣ ΚΑΙ ΜΕΓΑΛΗΣ ΠΑΡΑΣΚΕΥΗΣ

ΘΚΑΖΑΝΙΕ ΥΑΙΩΒΞ Ε΄ΓΑΓΩ Η ΒΕΛΗΚΑΓΩ ΠΛΥΤΚΑ

8. hlas // plag. 4<sup>th</sup> echos

1.

*Σήμερον τού Ναού τό καταπέτασμα*

(= Antif. 12b → Oktoichos/Automelon)

*Ως πρόβατον επί σφαγήν*

(→ Oktoichos/Automelon)

*Τοίς συλλαβούσι σε παρανόμοις*

(→ Antif. 7a)

3.

*Διά τόν φόβον τών Ιουδαίων*

*Πρό τού τιμίου σου Σταυρού*

(→ Oktoichos/Automelon)

6.

*Τάδε λέγει Κύριος τοίς Ιουδαίοις*

(=Antif. 12a, → Oktoichos/Automelon)

*Οι νομοθέται τού Ισραήλ*

(=Antif. 12c → Oktoichos/Automelon)

\* Velká část tropáron pochádza z antifón Strastí. V rukopisoch sú však opakovane uvedené s mierne odlišnou notáciou. Ich prepis je uvedený pri Strastiach (7a) alebo v Oktoichu (12).

// Majority of the troparia is borrowed from the preceding Antiphons. However, in mss. they may be repeatedly written down with a slightly different neumatation. They are transcribed in the Passions Antiphons (7a) or Oktoichos (Antif. 12).

**Byz**

Am 243v (244-6), Dk 225r (453-6), Ott 264v (532-7), Trin 251v (252-3)

G260 196r(200-1), G261 190v (195-7), G262 243r (246-9), G265 224r (229-31), G270 177v (182-3)

Vi 223r (445-53), Va 112r (112-14),

Sn 1214 189r (190-2)

**Starorus.**

Χηλ 60r, S407 150v

**Rus. ref.**

S408 136r, S410 138v, S411 248r, S412 157r, S414 723r, S429 529r, S431 248v, S447 254r

**Rus. staroobrad. // Russian Old Believers**

Pomor. Triodion Razumovskij 379/059 (4010) 176r,

## Text

Ἦχος πλ. δ' // Γλιεζ ἱ.

Διά τόν φόβον <sup>\*\*DG</sup> τών Ιουδαίων, <sup>υG3</sup>  
ο φίλος σου καί ο πλησίον Πέτρος, <sup>G</sup>  
ηρηήσατό σε Κύριε, <sup>a</sup>  
καί οδυρόμενος <sup>h</sup> ούτως εβόα. <sup>\*\*dG</sup>  
Τών δακρύων μου μή παρασιωπήσης. <sup>G3\*\*</sup>

εἶπα γάρ φυλάξαι <sup>\*dG</sup> τήν πίστιν οικτίρμον, <sup>\*\*dG</sup>  
καί οὐκ εφύλαξα. <sup>υG3</sup>

καί ημών τήν μετάνοιαν <sup>G2</sup> ούτω δέξαι, <sup>yh</sup>  
καί ἐλέησον ημάς. <sup>G3</sup>

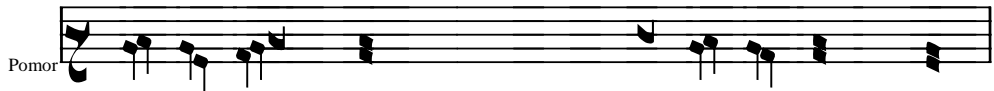
Ἐτράχα ράδι ἰδέηκαγω,  
δρδγζ τβόη ἡ ἐλίηκνήϊ πέτρζ  
ῶκέρζεα τεβέ γδι,  
ἡ ρυιδάα εήζε βοπίάσε:  
ελέζζ μοήχζ νε πρεμολχη,  
ρέχζ εο εοχρανήτη εέρδ ζιέδρε,  
ἡ νε εοχρανήχζ:  
ἡ ἡάσε ποκαλίηε τλίκοζδε πρίημη,  
ἡ πομήλδῃ ἡέζ.

Prepis // Transcription

Διά τόν φόβον τών Ιουδαίων



|             |                 |                    |       |        |          |     |
|-------------|-----------------|--------------------|-------|--------|----------|-----|
| Am,Dk       |                 |                    |       |        |          |     |
| Ott         |                 |                    |       |        |          |     |
| G260        |                 |                    |       |        |          |     |
| G261        |                 |                    |       |        |          |     |
| <b>G262</b> |                 |                    |       |        |          |     |
| Trin        |                 |                    |       |        |          |     |
| Vi          |                 |                    |       |        |          |     |
| Sn1214      |                 |                    |       |        |          |     |
| Va          |                 |                    |       |        |          |     |
|             | Δι- ά           | τόν φό-            | βον * | τόν Ι- | ου- δαί- | ων, |
| Pp          |                 |                    |       |        |          |     |
| S407        |                 |                    |       |        |          |     |
| S408/12     |                 |                    |       |        |          |     |
| S410/31     |                 |                    |       |        |          |     |
| S411/29/47  |                 |                    |       |        |          |     |
| S414        |                 |                    |       |        |          |     |
|             | ΤΡΑ_ ΧΑ_ ΡΑ_ ΔΗ | Η_ ΙΟ_ ΔΚ_ Η_ ΚΚΑ. |       |        |          |     |
|             | ΤΡΑ_ ΧΑ_ ΡΑ_ ΔΗ | Η_ ΙΟ_ ΔΚ_ Η_ ΚΚΑ. |       |        |          |     |





Dk    

Am     ?

Va,Vi    

ο φί- λος σου καί ο πλη- σί- ον Πέ- τρος, \*

Pp    

S407    

Δρομ ΓΨ     ΤΒΟ\_Η     ΒΛΗ\_ΖΨ\_ ΝΗ\_ Η     ΠΕ\_     ΤΡΨ.

S408    

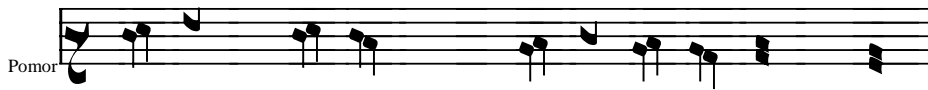
S412    

S410/11    

S414    

S429/47    

Δρομ ΓΨ     ΤΒΟ\_Η     ΒΛΗ\_ΖΨ\_ ΝΗ\_ Η     ΠΕ\_     ΤΡΨ.



ε ε

S431



Am,Dk



G260



Va,Vi



ηρ- νή- σα- τό σε Κύ- ρι- ε,

Pp



S407



ο\_ τ'α\_ βερ\_ γε\_ σα\_ τε\_ δε\_ γο\_ σπο\_ δη.

S408



S412



S410/11



S431

S414



S429/47



ω\_ το\_ βερ\_ γε\_ σα\_ τε\_ δε\_ γο\_ σπο\_ δη.





Ott

Handwritten musical notation for Ottobasso



Am

Handwritten musical notation for Am

Trin

Handwritten musical notation for Trin

G262

Handwritten musical notation for G262



Dk

Handwritten musical notation for Dk



G261

Handwritten musical notation for G261

Vi

Handwritten musical notation for Violin

Sn1214

Handwritten musical notation for Snare Drum

Va

Handwritten musical notation for Viola

καί ο-δυ-ρό-με-νος ού-τως ε-βό-

α. \*

Pp

Handwritten musical notation for Piano

Handwritten musical notation and S407

И ПЛА\_ΥΑ\_СА

СН\_ЦЕ ВЪ\_ПН\_ІА\_

ШЕ.

S408

Handwritten musical notation for S408

Handwritten musical notation for S408

S412

Handwritten musical notation for S412

Handwritten musical notation for S412

S410

Handwritten musical notation for S410

Handwritten musical notation for S410

S431

Handwritten musical notation for S431

Handwritten musical notation for S431

S411

Handwritten musical notation for S411

Handwritten musical notation for S411

S414

Handwritten musical notation for S414

Handwritten musical notation for S414

S429

Handwritten musical notation for S429

Handwritten musical notation for S429

S447

Handwritten musical notation for S447

Handwritten musical notation for S447

И ПЛА\_ΥΑ\_СА

СН\_ЦЕ ВЪ\_ПН\_А\_

ШЕ.

Pomor





Ott  
G260



Am  
Trin



Dk  
Va,Vi  
Sn1214

Γών δα- κρύ- ων μου μή πα- ρα- σι- ω- πή- σης,

Pp

S407

σαδ\_ ζα μο\_ η\_ χα νε\_ πρε\_ μαλ\_ υη.

S408

S412

S410

S411

S414

S429/47

σαε\_ ζο μο\_ η\_ χα νε\_ πρε\_ μολ\_ υη.

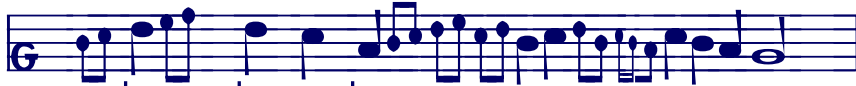
Pomor







Am



Trin

Handwritten musical notation in a non-Latin script, possibly representing a specific instrument or vocal line.



Am

Handwritten musical notation in a non-Latin script.

Dk

Handwritten musical notation in a non-Latin script.

Ott

Handwritten musical notation in a non-Latin script.

G262

Handwritten musical notation in a non-Latin script.

Vi

Handwritten musical notation in a non-Latin script.

Sn1214

Handwritten musical notation in a non-Latin script.

Va

Handwritten musical notation in a non-Latin script.

τήν πί- στιν οικ- τίρ- μον, \*

Pp

Handwritten musical notation in a non-Latin script.

S407

Handwritten musical notation in a non-Latin script.

ΒΚ\_ ρΟΥ ΨΕ\_ ΔΡΕ

S408

Handwritten musical notation in a non-Latin script.

S410/11/12/14/31

S429/47

Handwritten musical notation in a non-Latin script.

ΒΚ\_ ρΟΥ ΨΕ\_ ΔΡΕ





Trin



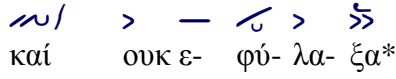
Am,Dk



Vi



Va



Pp



S407



И НЕ СЪ ХРА НИ ХЪ.

S408



S414

S412



S410



S411



S431



S429



S447



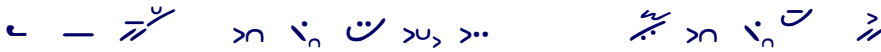
И НЕ СО ХРА НИ ХО.

Pomor

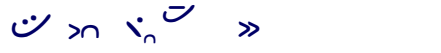




Trin



Am,Dk



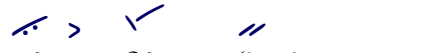
G262



Vi



Va



καί η- μών τήν με- τά- νοι- αν,

ού- τω δέ- ξαι \*

Pp



S407



И НА\_ ШЕ ПО\_ КА\_ Я\_ НИ\_ Е.

ТА\_ КО ПРИ\_ И\_ МИ.

S408



S412



S410



S411/31

S447



S414



И НА\_ ШЕ ПО\_ КА\_ Я\_ НИ\_ Е.

ТА\_ КО ПРИ\_ И\_ МИ.

S429



И НА\_ ШЕ ПО\_ КА\_ Я\_ НИ\_ Е.

ТА\_ КО ПРИ\_ И\_ МИ.

Pomor



И НА\_ ШЕ

ПО\_ КА\_ Я\_ НИ\_ Е.

ТА\_ КО ПРИ\_ И\_

МИ.



|        |        |     |           |        |     |
|--------|--------|-----|-----------|--------|-----|
| Am     |        |     |           |        |     |
| Dk     |        |     |           |        |     |
| G262   |        |     |           |        |     |
| Vi     |        |     |           |        |     |
| Sn1214 |        |     |           |        |     |
| Va     |        |     |           |        |     |
|        | καί ε- | λέ- | η- σον η- | μάς. + |     |
| Pp     |        |     |           |        | +   |
| S407   |        |     |           |        | +   |
|        | Η ΠΟ_  | ΜΗ_ | ΛΟΥ_ Η    | ΝΑ_    | ΣΨ. |
| S408   |        |     |           |        | +   |
|        | Η ΠΟ_  | ΜΗ_ | ΛΟΥ_ Η    | ΜΑ.    |     |
| S410   |        |     |           |        | +   |
| S414   |        |     |           |        | +   |
| S429   |        |     |           |        | +   |
| S447   |        |     |           |        | +   |
|        | Η ΠΟ_  | ΜΗ_ | ΛΟΥ_ Η    | ΝΑ_    | ΣΟ. |

S411/12

